

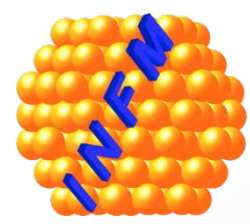
## CERIC

# Governance, Structure and Function of a Distributed ERIC



Elettra Sincrotrone Trieste

Matthias Girod



To offer an **integrated, multidisciplinary** and **multinational** research environment in the European Research Area, open on a competitive basis to researchers from all over the world, and accessible by industrial users, driving excellence, innovation and European integration.

**Multidisciplinary:** Not only one method but **Photons, Neutrons, Ions** and **Electrons** combined for nano-level analysis in **Material** and **Biomaterial Science**.

**Integrated:** All techniques accessible through one **single common entry point**. The access is based on selection by scientific excellence through **one international review panel** only.

**Multinational:** One **Distributed Research Infrastructure** based mainly in Central Europe.

→ **This vision was realised in an ERIC**

# What is an ERIC

A **European Research Infrastructure Consortium (ERIC)** is a full **legal entity** under Union law.

Its purpose is to establish and operate a **Research Infrastructure** on a non-economic basis

It must have at least one **EU Member State** and two other countries, either Member States or **associated states** as members. Further Member or Associated states, third countries or intergovernmental organisations may become members or observers without voting rights.

# The Case of CERIC-ERIC

- Proposed by **Austria, Czech Republic, Italy, Romania, Serbia and Slovenia.**
- Implemented by the EU Commission Decision in June 2014.
- **Croatia, Hungary and Poland** are participating countries, pending accession.
- Open also to other interested countries.
- Each Member and Observer offers one high quality **Partner Facility** through a **Representing Entity**, appointed by Member States.
- The Partner Facilities are evaluated by **international peer review** and must **complement the overall Infrastructure**

- **General Assembly** of the Members' representatives
- **Executive Director**
- **Board of Directors** of the Partner Facilities
- **International Scientific and Technical Advisory Committee (ISTAC)**
- **Central Seat** comprising **User Office, Project Office, TT/ILO Office, Legal Department and Central Finance Management**

(3)\* Each CERIC-ERIC Member contributes in kind by operating, making available and continuously upgrading one Partner Facility [...].

(4)\* The Italian Republic has provided a host contribution [...] to the establishment of the institutional seat and strengthening of CERIC-ERIC integrated operations, [...] including training, technology transfer and communication.

\*Commission Implementing Decision – June 24<sup>th</sup>, 2014

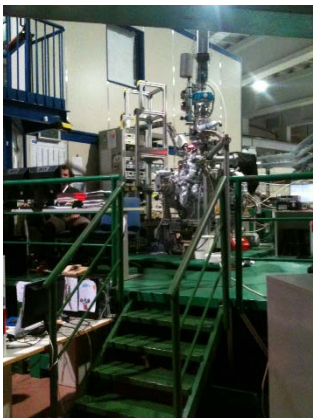
# The Operative Part: Participating facilities



**Austria**  
Scattering facilities  
at  
TU Graz and  
Elettra



**Croatia**  
Ion Beam facility  
at  
Ruder-Bosovic  
Institute



**Czech Republic**  
Surface analysis  
Facilities  
at  
Charles University and  
Elettra



**Hungary**  
Budapest  
Neutron  
Center



# The Operative Part: Participating Facilities



**Italy**  
Elettra  
Sinchrotrone  
Trieste



**Poland**  
SOLARIS  
Synchrotron  
Krakow



**Romania**  
TEM and  
EPR facilities  
at the  
National Institute  
for  
Material Physics



**Slovenia**  
NMR Center  
of the  
National Institute  
for  
Chemistry

# Open Access: The World before CERIC

**BNC**

**Deadline  
November**

**Review Panel**

**Access procedures**

**Report**

[www.bnc.hu](http://www.bnc.hu)

**Elettra**

**Deadline  
September**

**Review Panel**

**Access procedures**

**Report**

[www.elettra.eu](http://www.elettra.eu)

**NMR**

**Deadline  
open**

**Review Panel**

**Access procedures**

**Report**

[www.nmr.chem.uu.nl](http://www.nmr.chem.uu.nl)

# Open Access: The CERIC Way

One  
multi-technique  
proposal

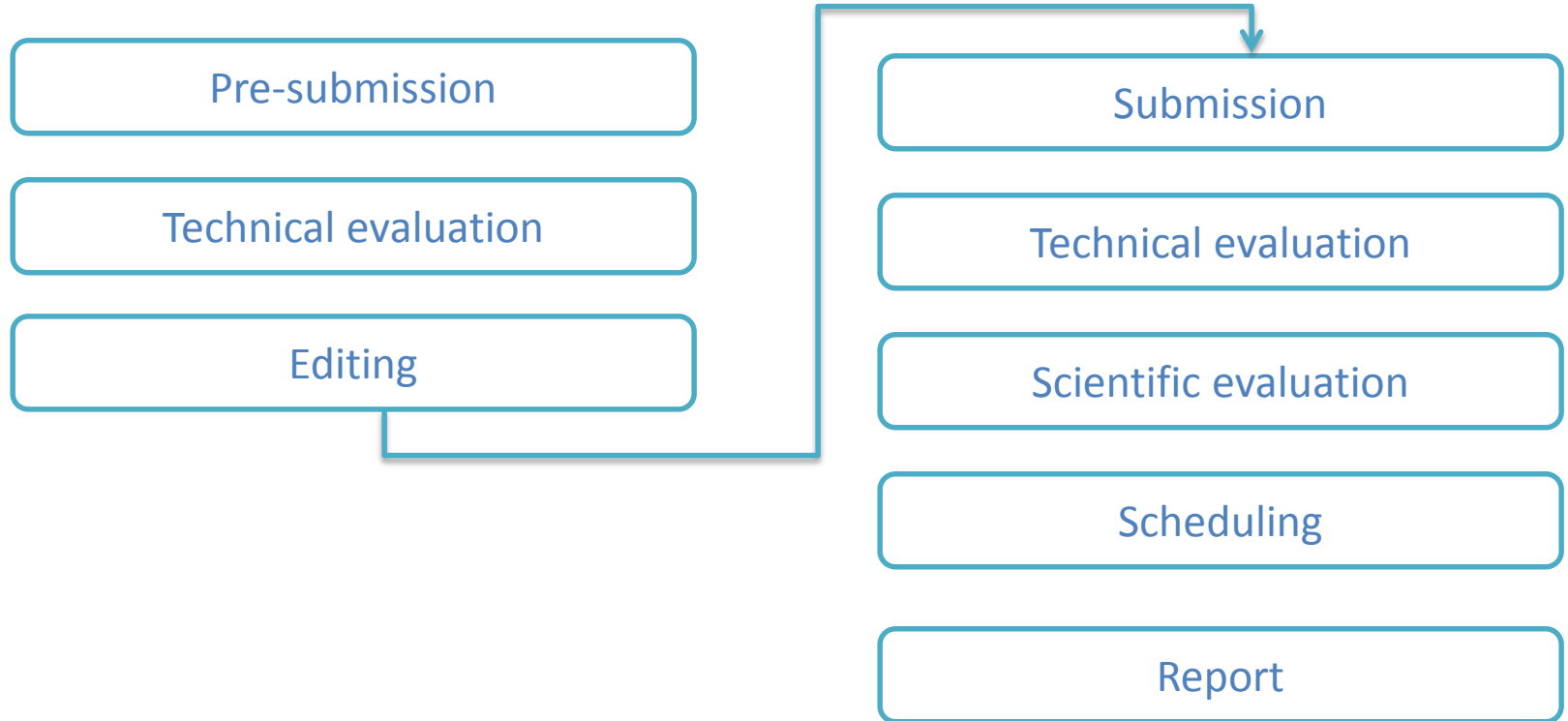
One Deadline (Two calls per year)

One Review Panel

One Access procedure

One Report

# Open Access: Procedure





# Industrial Liaison & Technology Transfer

CERIC-ERIC may carry out **limited economic activities**, provided that they are closely related to its principal task and that they do not jeopardize its achievement.

CERIC supports **innovation** through its services to customers from **local and international** industries.

These services include access to available facilities, consultancy, TT and strategic collaboration agreements.

CERIC stimulates the start of **spin-off companies** also involving different Partner Facilities and aiming at the international market.

An ERIC is eligible to both **Horizon2020 AND Structural Funds**.

- **MSCA-ITN** of all PFs for a **joint PhD program**
- **H2020-INFRAIA and –INFRADEV proposals in preparation**
- **EU Interreg CENTRAL proposals for personnel and structural improvements for CERIC and the PFs**



# Thank you

